

Get to know each probe



Axillary Probe
Place on axillary or femoral artery

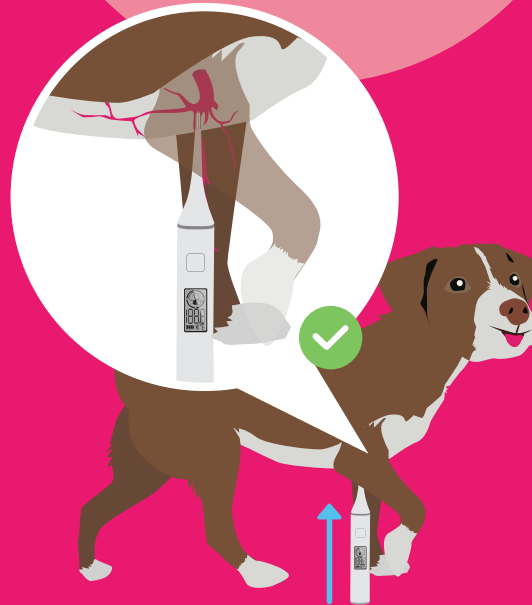


Ear Probe
Insert into pet's ear



Rectal Probe
Insert into pet's rectum

Correct Axillary Placement



Position thermometer upwards under the foreleg at axillary artery

FCC Warning
This device complies with part 15 of the FCC Rules. Operation is subject to the following two conditions: (1) This device may not cause harmful interference, and (2) this device must accept any interference received, including interference that may cause undesired operation. Any Changes or modifications not expressly approved by the party responsible for compliance could void the user's authority to operate the equipment. This equipment has been tested and found to comply with the limits for a Class B digital device, pursuant to part 15 of the FCC Rules. These limits are designed to provide reasonable protection against harmful interference in a residential installation. This equipment generates uses and can radiate radio frequency energy and, if not installed and used in accordance with the instructions, may cause harmful interference to radio communications. However, there is no guarantee that interference will not occur in a particular installation. If this equipment does cause harmful interference to radio or television reception, which can be determined by turning the equipment off and on, the user is encouraged to try to correct the interference by one or more of the following measures:

- Reorient or relocate the receiving antenna.
- Increase the separation between the equipment and receiver.
- Connect the equipment into an outlet on a circuit different from that to which the receiver is connected.
- Consult the dealer or an experienced radio/TV technician for help.

The device has been evaluated to meet general RF exposure requirement. The device can be used in portable exposure condition without restriction.

Product name: Mella Pro Pet Thermometer

Model: Mella001

Charging: Wireless charging

Charge from time to time: 3 minutes

Battery capacity: 30F (supercapacitor)

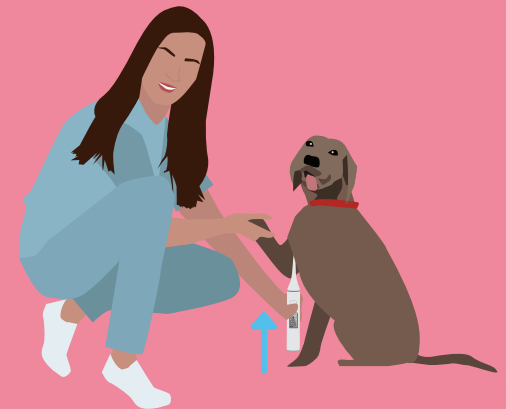
Measurement range: 34.0C to 44.0C

Wireless communication: BLE4.2

Customer Service
201.977.6411
support@mella.ai



Mella Pro Pet Thermometer Instructional Guide



For Setup and Tutorials:
www.mella.ai/setup

EARS AND REARS ARE OUT, ARMPITS ARE IN!

Start by downloading the app

1. Install the app

Install the mobile or desktop app by searching "Mella"

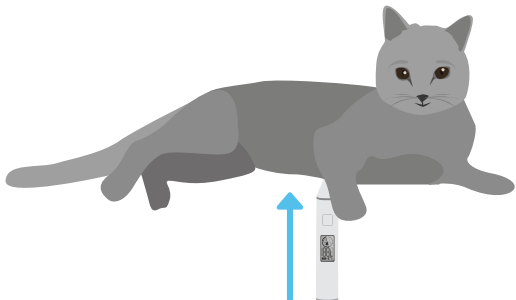


2. Create an account

Enter your user information and organization and practice information as it applies to you.

The image shows three sequential screenshots of the Mella app's account creation process. The first screen, titled 'Create Account', has fields for First Name, Last Name, Email Address*, Phone Number, Create Password, and Confirm Password, with a 'Continue' button at the bottom. The second screen asks 'Do you have a practice management system?' with a Vetspire logo and two radio button options: 'Vetspire' and 'Ezyvet'. The third screen, titled 'Please enter your Vetspire API key.', has a text field for 'Your Vetspire API Key' and a 'Remember Me' checkbox, with a 'Connect' button at the bottom. Arrows indicate the flow from the first screen to the second, and from the second to the third.

The USB charger must be connected to the PC to use the Mella Desktop App



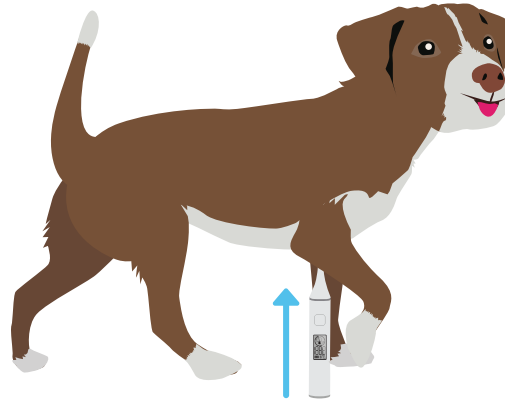
Connect Mella to your device

3. Make sure your phone's Bluetooth is ON

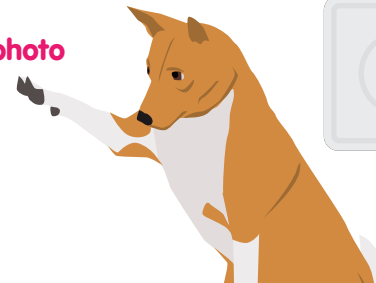
Go to settings to check your Bluetooth is ON.

4. Press the button on your Mella Thermometer

Mella pairs to your device via Bluetooth automatically and you're ready to measure. Mella will guide you if you need help.



To select a pet, tap the pet photo in the top right corner. If the pet has no profile, you can select "Walk-In" and assign temperature later.



Charging Mella wirelessly

Wireless Charging

Place the Mella Thermometer in the paw charger. Mella will be fully charged in about 5 minutes.

Charging on a computer

Connect the USB cable to your laptop or desktop computer

Charging with a USB plug

Connect the USB cable to a USB power adapter and plug it into your wall socket

